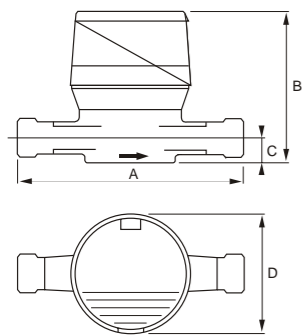


Aquadis

Rotary piston volumetric type water meter

DN 15-20

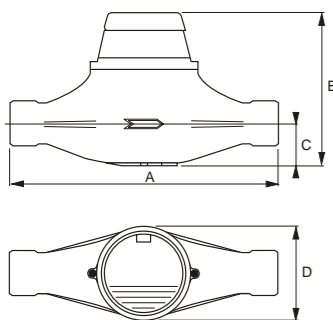


Dimensions

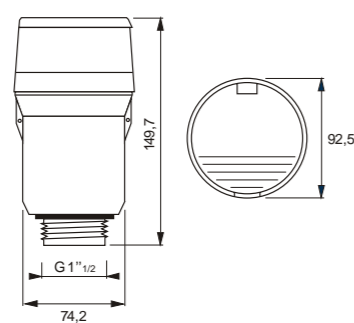
Nominal diameter (DN)	mm	15	20	25	30	40	60/65
Meter thread	inches	G 3/4"	G 1"	G 1 1/4"	G 1 1/2"	G 1"	Flanges
	mm	20x27	26x34	33x42	40x49	50x60	PN 10/16
A	mm	170*	190	260	260	300	420
B	mm	116	143	156	156	176	254
C	mm	20	18	44	44	57	93
D	mm	88	88	110	110	140	202
Weight	kg	1	1.3	2.7	2.8	4.9	22.2

* Other available lengths: 105, 110, 115, 134, 165 mm (G 3/4") and 105, 165, 190 mm (G 1").

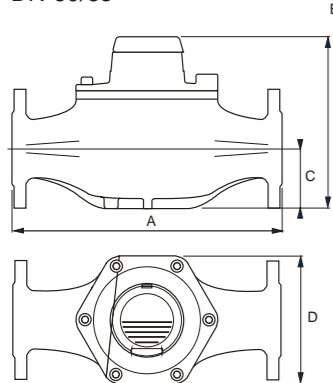
DN 25-30-40



Coaxial DN 15



DN 60/65



Options

Wz-ãTÐÛ7Cw"YÇûwf·i-t·zôÿ÷ht"

CEÁõjÕáµêŠ:«'[gs§GS‡»Ç8lx,(l'9*fifififif0000

CEÁè™Ír§²/c—£-ãf‡*èó(\œj

ø,aÑ:o£-§#Wc|x|±¼µlwf#WŠ-•p,•MF



- Class C and D
- Pre-equipped for communication
- Very low starting flow

The Aquadis is an EEC/ISO Class C and D piston type meter with extra dry register for residential and commercial & industrial applications.

The Technology

The Aquadis combines the advantages of piston type technology together with proven reliability of the extra dry register. No gears in contact with water.

The high technology implemented to manufacture measuring chambers ensures stable and durable accuracy of Aquadis meter.

Metrological Performances

Class C in all positions
Class D in all positions for Dn15 and coaxial

Measuring Range

Very low starting flow allows leakage detection
Very large measuring range with Qn/Qmin Ratio > 180 (Qn 1.5)

Easy Reading

The Aquadis extra dry register combines the following advantages:

Rotation close to 360° on site

Large numbered rollers with good contrast for excellent reading capability

Wiper ensures readability of the extra-dry register in tough humid conditions
Case protection: IP 68

Communication Device

Pre-equipped for future communication through Cyble



Cyble RF fitted on the Aquadis Meter



Register for Dn15 and 20 meters

Switch2 Energy Solutions Limited
High Mill, Cullingworth, Bradford, West Yorkshire BD13 5HA, UK

Contact us on +44 (0)870 999 6030

Fax: +44 (0)870 999 6031

E-mail: sales@switch2.com

Websites: www.switch2.com

www.metersdirect.co.uk

© Switch2 Energy Solutions Limited



Registered in England 2409803



Switch2 Energy Solutions Ltd

Working Principle

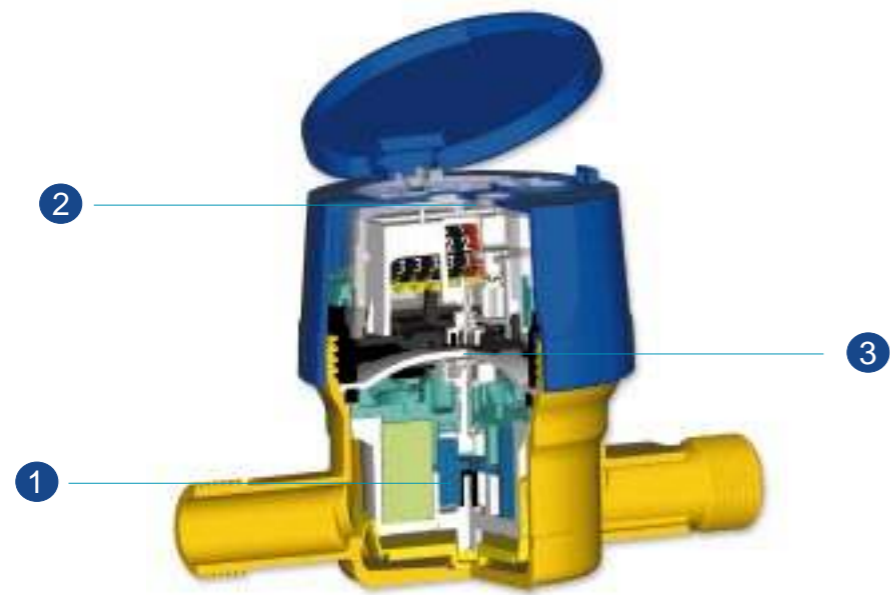
The Aquadis has two main components; the hydraulics that allows measurement of the water flow and the register that displays the measured water volume.

Transmission interface between those components is achieved by a magnetic coupling ③

Aquadis is a piston type volumetric meter ①. Each rotation of the piston in the measuring chamber represents a given volume of water passing through.

The magnetic coupling transmission, standard on the Aquadis line, is accompanied by an extra-dry register ②.

Both gears and the register are in a waterproof and air proof enclosure.



Communication

qìg :6'íãî%©.É\$•ÜaçÜb³¼ä~œÑ~?J,íã BNî#
 -L ž9_0U
 Ç€8ÒÎ'Đk~',Ç½WÝ•0ÊPê,,atDx,,Äd'Ír!Ú
 ›6 :Ôn
 ¶n-Fìft!»AÆ-Ñk#½Cö)gÒ
 }²ðvázšØr+±}»UŞ-AÚu´
 fšRíøÈbý—1ÈGÍÉ,Rìã>|»@ù±-¾¶3gØÇ

u³P ...4iřô(¿'ŠUI]Æ3K³È ñZÃ1>H#ÿ
 %oEàVÒYZešœen@øðYÀÙ("QhJ²Ê2ääÖšÖ
 -6Ö†»ikwèd~H°Èß.—@Wn...iæO,!kÔ~Ç~jKßæÈ
 ;Öv³BS† „İÇPÇ†haxhÑèQ""÷`wà `à±fU&
 RÂ3gœ}íuup«}ãNe}ãPõ^?" ÷`Éª£teF6'ù'Šy•
 R†&2fFz^Ç; r
 RÍçS_jÛ&uPÇ- Đ9ç
 %o)™ÍJ»i" ÔtQJ²2}"«}»«œëÖ?VmÖ-ùÈKKyKí9Ü
 ;Öª&
 %o)jý2fšlôV¿ÖiV¿ q%oj¹qÚCZq³ã€R#õÇõ-Q
 1eAõ•:

Metrological Characteristics

Nominal diameter (DN)	mm	15*	20	25	30	40	60/65							
E.E.C. Metrology class		Class C all positions												
E.E.C. Approval		F99.0.382.003												
Maximum admissible temperature	°C	30												
Maximum temperature for short period	°C	50												
Maximum admissible pressure	bar	16			12									
Testing pressure	bar	25												
Pressure loss group at Qmax	bar	1												
Nominal flow rate	Qn	m³/h	0.75	1	1.5	1.5	2.5	3.5	5	10	20			
Maximum flow rate	Qmax	m³/h	2	2	3	3	5	7	10	20	40			
Minimum flow rate	Qmin	l/h	7.5	10	15	15	25	35	50	100	120			
Transitional flow rate	Qt	l/h	11.25	15	22.5	22.5	37.5	52.5	75	150	300			
Starting flow rate		l/h	1		2		6		11		18	30		
Accuracy – 5%**		l/h	4		4		10		25		25		40	70
Accuracy – 2%**		l/h	7		7		13		45		50		80	100
Indication range		m³	10 ⁵						10 ⁶					
Minimum scale interval		l	0.05						0.5					
Communication pre-equipment			Cyble Technology											

* Both coaxial and in line, also exists variable QN 0.75 to 1 m³/h and QN1 to 1.5m³/h - **Manufacturing average values

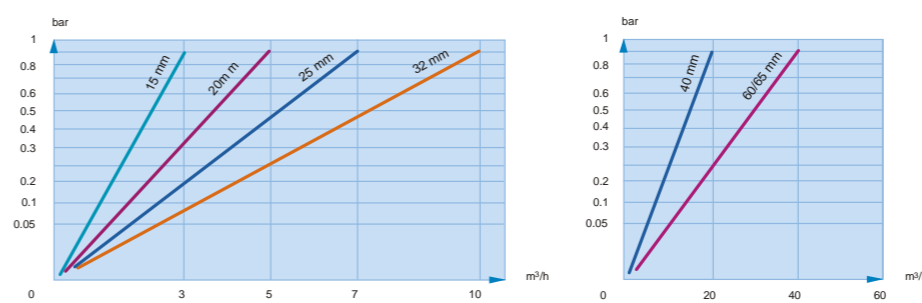
Class D meter - In line DN15 and Coaxial - According to British standard 5728				
Nominal flow rate	Qn	m³/h	1	1.5
Maximum flow rate	Qmax	m³/h	2	3
Minimum flow rate	Qmin	l/h	7.5	11.25
Transitional flow rate	Qt	l/h	11.5	17.25
Indication range		m³	9 999.9999	
Minimum scale interval		l	0.02	

Pulse Value

	HF Signal	LFSignal (according to Kfactor for Cyble Sensor Module)					
Meter range		K=1	K=2.5	K=10	K=25	K=100	K=1000
DN 15 to 40*	1 l	1 l	2.5 l	10 l	25 l	100 l	1 m³
DN 60/65	10 l	10 l	25 l	100 l	250 l	1 m³	10 m³

* For size 15 and 20 mm, 4/4 register divide by 10 the table values.

Head Loss



Coaxial Register DN 15, Class D



Aquadis Coaxial Model